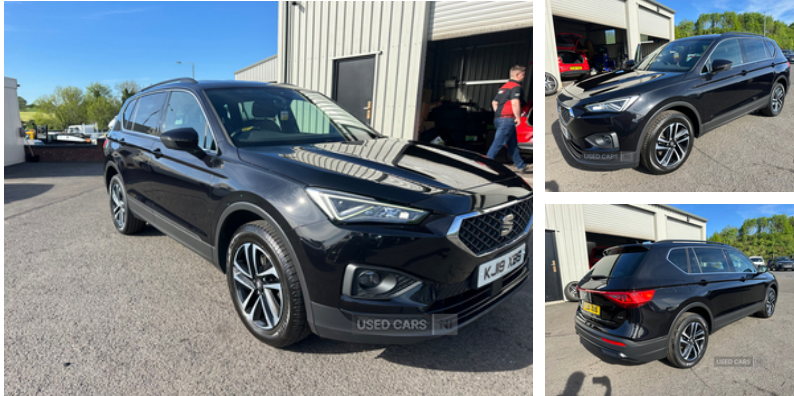


Seat Tarraco 2.0 TDI SE Technology 5dr DSG 4Drive | 2019

7 SEATER

£18,450



Vehicle Features

'Lights On' warning buzzer, 3 USB, 3 zone climate control, 3D Map display, 4Drive versions with off-road/snow, 8 speakers, 12V socket, 12v socket in front, 18" Performance machined alloy wheels 37/1, Active front head restraints, Alarm, AM/FM Radio, Ambient spot lighting and front footwell illumination, Anti-lock brakes, Apple Car Play, Auto dimming rear view mirror, Auto headlights with automatic coming and leaving home function, Automatic headlight adjustment, Aux-in, Beats audio system, Black bumpers, Black interior roof, Body colour door mirrors and handles, Centre armrest in front with air outlet in rear, Chrome dashboard detailing, Chrome front grille frame, Cloth upholstery, Comfort front seats, Comfort suspension, Cruise control, DAB, Dark tinted windows and white ambient light in front and rear door panels, Digital clock, Digital cockpit, Driver/passenger lumbar adjustment, Driver and passenger sunvisor with covered and illuminated mirror, Drivers knee airbag, e-Call (emergency call), Easy fold rear seat system - second and third row, Electric front/rear windows, Electronic parking brake with auto hold, Electronic stability control, Exterior black mouldings, Folding table on front seat breakrests, Forward and backward adjustable seats 2nd row, Four cargo rings in the boot, Front assist city emergency braking and pedestrian protection, Front courtesy light with front reading lights, Front cupholders, Front halogen fog lights with cornering function, Front passenger airbag deactivation, Front seat back storage pockets, Front side airbags, Fuel door linked to central locking, Full Link Smartphone Integration with Mirror Link, Gear recommendation indicator, gear shifts, Google Android Auto, Height adjustable driver's seat, Height adjustable front headrests, Height adjustable passenger seat, Hidden exhaust pipe, Hill hold control, Illuminated boot, Instrument lighting with brightness control, ISOFIX points in outer 2nd row seats and front passenger seat with top tether anchorage points, Keyless entry and go, Lane assist, Leather gear knob, Leather steering wheel, Leather wrapped

Miles:	69000
Fuel Type:	Diesel
Transmission:	Automatic
Colour:	Black
Engine Size:	1968
CO2 Emission:	146
Tax Band:	Petrol/Diesel (£195 p/a)
Body Style:	Estate
Insurance group:	21E
Reg:	KJ19XBS

Technical Specs

DIMENSIONS	
Length:	4735mm
Width:	1839mm
Height:	1674mm
Seats:	7
Luggage Capacity (Seats Up):	700L
Gross Weight:	2540KG
Max. Loading Weight:	778KG

PERFORMANCE & ECONOMY	
Fuel Consum. (Urban Cold):	45.6MPG
Fuel Consum. (Extra Urban):	54.3MPG
Fuel Consum. (Combined):	50.4MPG
Fuel Tank Capacity:	60L
Number Of Gears:	7 SPEED
Top Speed:	123MPH
Acceleration 0-100 km/h:	9.8s
Engine Power BHP:	147.5BHP

multifunction steering wheel, LED daytime running lights, LED headlights with lens and taillights, Locking wheel bolts, Low fuel warning light, Luggage compartment floor with split function, Lumbar support, Navigation system with 8" colour touchscreen with proximity sensor, Outside temperature gauge, Overhead storage compartment, Power folding and adjustable door mirrors, Power locking and remote control with two foldable keys and opening boot selector, progressive steering, Rain sensing wipers, Rear armrest and easy back seat release mechanism from boot, Rear fog lights, Rear parking sensor, Rear reading lights, Rear wash/wipe, RPM counter, SD card, Seatbelt reminders for all seats, SEAT Drive profile - 4 different modes, Sliding boot cover, steering response, throttle response, Tiredness recognition system, Tool kit, Traction control, Trip computer, Two curtain airbags, Tyre pressure monitoring system, Under front seats storage tray, Wash water level indicator, XDS electronic differential lock